

ARAS 4



1A 1

2

3

4

5

6

7

8

9

10

11

H

G

F

F

E

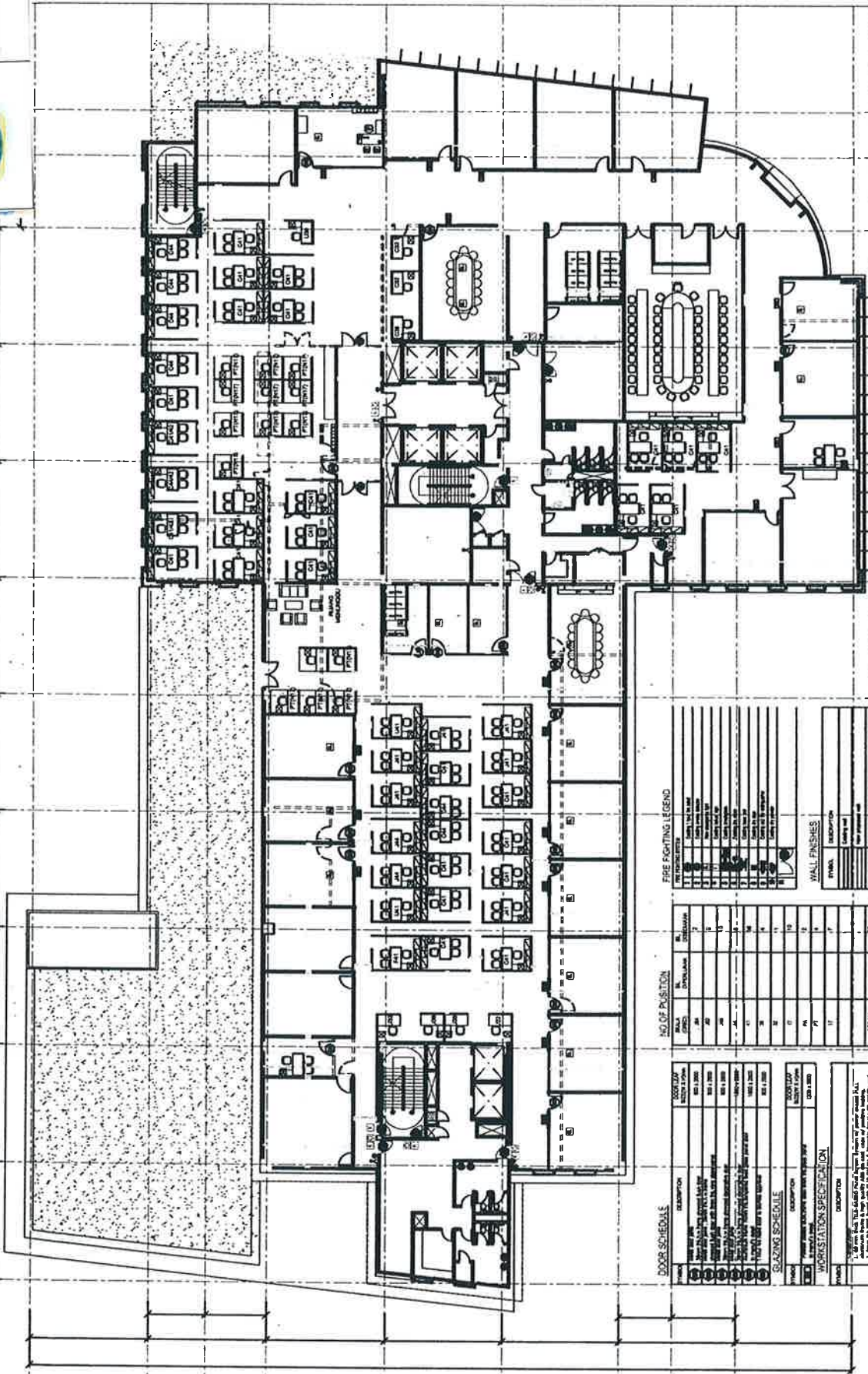
D

C

B1

B

A



NO. OF POSITION	
NO.	DESCRIPTION
1	...
2	...
3	...
4	...
5	...
6	...
7	...
8	...
9	...
10	...
11	...
12	...
13	...
14	...
15	...
16	...
17	...
18	...
19	...
20	...
21	...
22	...
23	...
24	...
25	...
26	...
27	...
28	...
29	...
30	...
31	...
32	...
33	...
34	...
35	...
36	...
37	...
38	...
39	...
40	...
41	...
42	...
43	...
44	...
45	...
46	...
47	...
48	...
49	...
50	...
51	...
52	...
53	...
54	...
55	...
56	...
57	...
58	...
59	...
60	...
61	...
62	...
63	...
64	...
65	...
66	...
67	...
68	...
69	...
70	...
71	...
72	...
73	...
74	...
75	...
76	...
77	...
78	...
79	...
80	...
81	...
82	...
83	...
84	...
85	...
86	...
87	...
88	...
89	...
90	...
91	...
92	...
93	...
94	...
95	...
96	...
97	...
98	...
99	...
100	...

FIRE FIGHTING LEGEND	
NO.	DESCRIPTION
1	...
2	...
3	...
4	...
5	...
6	...
7	...
8	...
9	...
10	...
11	...
12	...
13	...
14	...
15	...
16	...
17	...
18	...
19	...
20	...
21	...
22	...
23	...
24	...
25	...
26	...
27	...
28	...
29	...
30	...
31	...
32	...
33	...
34	...
35	...
36	...
37	...
38	...
39	...
40	...
41	...
42	...
43	...
44	...
45	...
46	...
47	...
48	...
49	...
50	...
51	...
52	...
53	...
54	...
55	...
56	...
57	...
58	...
59	...
60	...
61	...
62	...
63	...
64	...
65	...
66	...
67	...
68	...
69	...
70	...
71	...
72	...
73	...
74	...
75	...
76	...
77	...
78	...
79	...
80	...
81	...
82	...
83	...
84	...
85	...
86	...
87	...
88	...
89	...
90	...
91	...
92	...
93	...
94	...
95	...
96	...
97	...
98	...
99	...
100	...

WALL FINISHES	
NO.	DESCRIPTION
1	...
2	...
3	...
4	...
5	...
6	...
7	...
8	...
9	...
10	...
11	...
12	...
13	...
14	...
15	...
16	...
17	...
18	...
19	...
20	...
21	...
22	...
23	...
24	...
25	...
26	...
27	...
28	...
29	...
30	...
31	...
32	...
33	...
34	...
35	...
36	...
37	...
38	...
39	...
40	...
41	...
42	...
43	...
44	...
45	...
46	...
47	...
48	...
49	...
50	...
51	...
52	...
53	...
54	...
55	...
56	...
57	...
58	...
59	...
60	...
61	...
62	...
63	...
64	...
65	...
66	...
67	...
68	...
69	...
70	...
71	...
72	...
73	...
74	...
75	...
76	...
77	...
78	...
79	...
80	...
81	...
82	...
83	...
84	...
85	...
86	...
87	...
88	...
89	...
90	...
91	...
92	...
93	...
94	...
95	...
96	...
97	...
98	...
99	...
100	...

DOOR SCHEDULES	
NO.	DESCRIPTION
1	...
2	...
3	...
4	...
5	...
6	...
7	...
8	...
9	...
10	...
11	...
12	...
13	...
14	...
15	...
16	...
17	...
18	...
19	...
20	...
21	...
22	...
23	...
24	...
25	...
26	...
27	...
28	...
29	...
30	...
31	...
32	...
33	...
34	...
35	...
36	...
37	...
38	...
39	...
40	...
41	...
42	...
43	...
44	...
45	...
46	...
47	...
48	...
49	...
50	...
51	...
52	...
53	...
54	...
55	...
56	...
57	...
58	...
59	...
60	...
61	...
62	...
63	...
64	...
65	...
66	...
67	...
68	...
69	...
70	...
71	...
72	...
73	...
74	...
75	...
76	...
77	...
78	...
79	...
80	...
81	...
82	...
83	...
84	...
85	...
86	...
87	...
88	...
89	...
90	...
91	...
92	...
93	...
94	...
95	...
96	...
97	...
98	...
99	...
100	...

GLAZING SCHEDULE	
NO.	DESCRIPTION
1	...
2	...
3	...
4	...
5	...
6	...
7	...
8	...
9	...
10	...
11	...
12	...
13	...
14	...
15	...
16	...
17	...
18	...
19	...
20	...
21	...
22	...
23	...
24	...
25	...
26	...
27	...
28	...
29	...
30	...
31	...
32	...
33	...
34	...
35	...
36	...
37	...
38	...
39	...
40	...
41	...
42	...
43	...
44	...
45	...
46	...
47	...
48	...
49	...
50	...
51	...
52	...
53	...
54	...
55	...
56	...
57	...
58	...
59	...
60	...
61	...
62	...
63	...
64	...
65	...
66	...
67	...
68	...
69	...
70	...
71	...
72	...
73	...
74	...
75	...
76	...
77	...
78	...
79	...
80	...
81	...
82	...
83	...
84	...
85	...
86	...
87	...
88	...
89	...
90	...
91	...
92	...
93	...
94	...
95	...
96	...
97	...
98	...
99	...
100	...

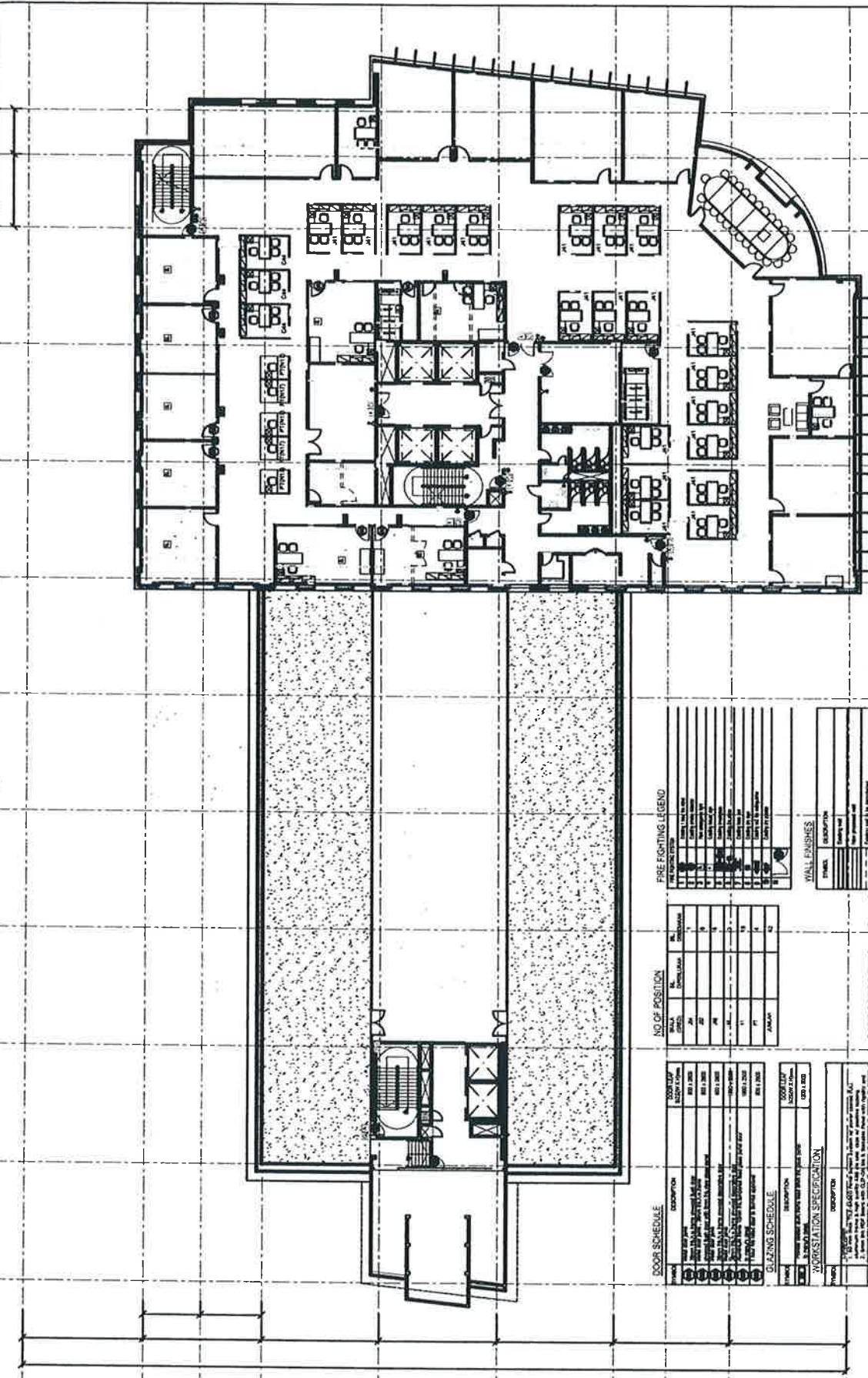
WORKSTATION SPECIFICATION	
NO.	DESCRIPTION
1	...
2	...
3	...
4	...
5	...
6	...
7	...
8	...
9	...
10	...
11	...
12	...
13	...
14	...
15	...
16	...
17	...
18	...
19	...
20	...
21	...
22	...
23	...
24	...
25	...
26	...
27	...
28	...
29	...
30	...
31	...
32	...
33	...
34	...
35	...
36	...
37	...
38	...
39	...
40	...
41	...
42	...
43	...
44	...
45	...
46	...
47	...
48	...
49	...
50	...
51	...
52	...
53	...
54	...
55	...
56	...
57	...
58	...
59	...
60	...
61	...
62	...
63	...
64	...
65	...
66	...
67	...
68	...
69	...
70	...
71	...
72	...
73	...
74	...
75	...
76	...
77	...
78	...
79	...
80	...
81	...
82	...
83	...
84	...
85	...
86	...
87	...
88	...
89	...
90	...
91	...
92	...
93	...
94	...
95	...
96	...
97	...
98	...
99	...
100	...

NOTES:
 1. All dimensions are in millimeters unless otherwise stated.
 2. All work shall be in accordance with the latest edition of the relevant standards.
 3. The contractor shall be responsible for obtaining all necessary permits and approvals.
 4. The contractor shall be responsible for the safety of all workers and the public.
 5. The contractor shall be responsible for the protection of all existing services.
 6. The contractor shall be responsible for the disposal of all waste materials.
 7. The contractor shall be responsible for the maintenance of all equipment.
 8. The contractor shall be responsible for the completion of all work within the specified time frame.
 9. The contractor shall be responsible for the quality of all work.
 10. The contractor shall be responsible for the safety of all workers and the public.
 11. The contractor shall be responsible for the protection of all existing services.
 12. The contractor shall be responsible for the disposal of all waste materials.
 13. The contractor shall be responsible for the maintenance of all equipment.
 14. The contractor shall be responsible for the completion of all work within the specified time frame.
 15. The contractor shall be responsible for the quality of all work.
 16. The contractor shall be responsible for the safety of all workers and the public.
 17. The contractor shall be responsible for the protection of all existing services.
 18. The contractor shall be responsible for the disposal of all waste materials.
 19. The contractor shall be responsible for the maintenance of all equipment.
 20. The contractor shall be responsible for the completion of all work within the specified time frame.
 21. The contractor shall be responsible for the quality of all work.
 22. The contractor shall be responsible for the safety of all workers and the public.
 23. The contractor shall be responsible for the protection of all existing services.
 24. The contractor shall be responsible for the disposal of all waste materials.
 25. The contractor shall be responsible for the maintenance of all equipment.
 26. The contractor shall be responsible for the completion of all work within the specified time frame.
 27. The contractor shall be responsible for the quality of all work.
 28. The contractor shall be responsible for the safety of all workers and the public.
 29. The contractor shall be responsible for the protection of all existing services.
 30. The contractor shall be responsible for the disposal of all waste materials.
 31. The contractor shall be responsible for the maintenance of all equipment.
 32. The contractor shall be responsible for the completion of all work



2
3
4
5
6
7
8
9
10
11

H
G
F
F
E
D
C
B1
B
A



NO. OF POSITION

NO.	DESCRIPTION	NO.
1	DOOR	1
2	WINDOW	1
3
4
5
6
7
8
9
10
11
12
13
14
15
16
17
18
19
20
21
22
23
24
25
26
27
28
29
30
31
32
33
34
35
36
37
38
39
40
41
42
43
44
45
46
47
48
49
50
51
52
53
54
55
56
57
58
59
60
61
62
63
64
65
66
67
68
69
70
71
72
73
74
75
76
77
78
79
80
81
82
83
84
85
86
87
88
89
90
91
92
93
94
95
96
97
98
99
100

PRE-FIGHTING LEGEND

NO.	DESCRIPTION
1	...
2	...
3	...
4	...
5	...
6	...
7	...
8	...
9	...
10	...
11	...
12	...
13	...
14	...
15	...
16	...
17	...
18	...
19	...
20	...
21	...
22	...
23	...
24	...
25	...
26	...
27	...
28	...
29	...
30	...
31	...
32	...
33	...
34	...
35	...
36	...
37	...
38	...
39	...
40	...
41	...
42	...
43	...
44	...
45	...
46	...
47	...
48	...
49	...
50	...
51	...
52	...
53	...
54	...
55	...
56	...
57	...
58	...
59	...
60	...
61	...
62	...
63	...
64	...
65	...
66	...
67	...
68	...
69	...
70	...
71	...
72	...
73	...
74	...
75	...
76	...
77	...
78	...
79	...
80	...
81	...
82	...
83	...
84	...
85	...
86	...
87	...
88	...
89	...
90	...
91	...
92	...
93	...
94	...
95	...
96	...
97	...
98	...
99	...
100	...

WALL FINISHES

FINISH	DESCRIPTION
1	...
2	...
3	...
4	...
5	...
6	...
7	...
8	...
9	...
10	...
11	...
12	...
13	...
14	...
15	...
16	...
17	...
18	...
19	...
20	...
21	...
22	...
23	...
24	...
25	...
26	...
27	...
28	...
29	...
30	...
31	...
32	...
33	...
34	...
35	...
36	...
37	...
38	...
39	...
40	...
41	...
42	...
43	...
44	...
45	...
46	...
47	...
48	...
49	...
50	...
51	...
52	...
53	...
54	...
55	...
56	...
57	...
58	...
59	...
60	...
61	...
62	...
63	...
64	...
65	...
66	...
67	...
68	...
69	...
70	...
71	...
72	...
73	...
74	...
75	...
76	...
77	...
78	...
79	...
80	...
81	...
82	...
83	...
84	...
85	...
86	...
87	...
88	...
89	...
90	...
91	...
92	...
93	...
94	...
95	...
96	...
97	...
98	...
99	...
100	...

DOOR SCHEDULE

NO.	DESCRIPTION	NO.
1	...	1
2	...	2
3	...	3
4	...	4
5	...	5
6	...	6
7	...	7
8	...	8
9	...	9
10	...	10
11	...	11
12	...	12
13	...	13
14	...	14
15	...	15
16	...	16
17	...	17
18	...	18
19	...	19
20	...	20
21	...	21
22	...	22
23	...	23
24	...	24
25	...	25
26	...	26
27	...	27
28	...	28
29	...	29
30	...	30
31	...	31
32	...	32
33	...	33
34	...	34
35	...	35
36	...	36
37	...	37
38	...	38
39	...	39
40	...	40
41	...	41
42	...	42
43	...	43
44	...	44
45	...	45
46	...	46
47	...	47
48	...	48
49	...	49
50	...	50
51	...	51
52	...	52
53	...	53
54	...	54
55	...	55
56	...	56
57	...	57
58	...	58
59	...	59
60	...	60
61	...	61
62	...	62
63	...	63
64	...	64
65	...	65
66	...	66
67	...	67
68	...	68
69	...	69
70	...	70
71	...	71
72	...	72
73	...	73
74	...	74
75	...	75
76	...	76
77	...	77
78	...	78
79	...	79
80	...	80
81	...	81
82	...	82
83	...	83
84	...	84
85	...	85
86	...	86
87	...	87
88	...	88
89	...	89
90	...	90
91	...	91
92	...	92
93	...	93
94	...	94
95	...	95
96	...	96
97	...	97
98	...	98
99	...	99
100	...	100

GLAZING SCHEDULE

NO.	DESCRIPTION	NO.
1	...	1
2	...	2
3	...	3
4	...	4
5	...	5
6	...	6
7	...	7
8	...	8
9	...	9
10	...	10
11	...	11
12	...	12
13	...	13
14	...	14
15	...	15
16	...	16
17	...	17
18	...	18
19	...	19
20	...	20
21	...	21
22	...	22
23	...	23
24	...	24
25	...	25
26	...	26
27	...	27
28	...	28
29	...	29
30	...	30
31	...	31
32	...	32
33	...	33
34	...	34
35	...	35
36	...	36
37	...	37
38	...	38
39	...	39
40	...	40
41	...	41
42	...	42
43	...	43
44	...	44
45	...	45
46	...	46
47	...	47
48	...	48
49	...	49
50	...	50
51	...	51
52	...	52
53	...	53
54	...	54
55	...	55
56	...	56
57	...	57
58	...	58
59	...	59
60	...	60
61	...	61
62	...	62
63	...	63
64	...	64
65	...	65
66	...	66
67	...	67
68	...	68
69	...	69
70	...	70
71	...	71
72	...	72
73	...	73
74	...	74
75	...	75
76	...	76
77	...	77
78	...	78
79	...	79
80	...	80
81	...	81
82	...	82
83	...	83
84	...	84
85	...	85
86	...	86
87	...	87
88	...	88
89	...	89
90	...	90
91	...	91
92	...	92
93	...	93
94	...	94
95	...	95
96	...	96
97	...	97
98	...	98
99	...	99
100	...	100

WORKSATION SPECIFICATION

1. The worksation shall be in accordance with the latest edition of the relevant standards and specifications.

2. The worksation shall be designed to provide a safe and healthy working environment for the user.

3. The worksation shall be designed to be adjustable to suit the user's requirements.

4. The worksation shall be designed to be easy to use and maintain.

5. The worksation shall be designed to be durable and long-lasting.

6. The worksation shall be designed to be aesthetically pleasing.

7. The worksation shall be designed to be compatible with the user's equipment.

8. The worksation shall be designed to be compatible with the user's software.

9. The worksation shall be designed to be compatible with the user's network.

10. The worksation shall be designed to be compatible with the user's security requirements.

11. The worksation shall be designed to be compatible with the user's accessibility requirements.

12. The worksation shall be designed to be compatible with the user's environmental requirements.

13. The worksation shall be designed to be compatible with the user's energy requirements.

14. The worksation shall be designed to be compatible with the user's data requirements.

15. The worksation shall be designed to be compatible with the user's communication requirements.

16. The worksation shall be designed to be compatible with the user's storage requirements.

17. The worksation shall be designed to be compatible with the user's backup requirements.

18. The worksation shall be designed to be compatible with the user's recovery requirements.

19. The worksation shall be designed to be compatible with the user's disaster recovery requirements.

20. The worksation shall be designed to be compatible with the user's business continuity requirements.

21. The worksation shall be designed to be compatible with the user's risk management requirements.

22. The worksation shall be designed to be compatible with the user's compliance requirements.

23. The worksation shall be designed to be compatible with the user's legal requirements.

24. The worksation shall be designed to be compatible with the user's regulatory requirements.

25. The worksation shall be designed to be compatible with the user's industry requirements.

26. The worksation shall be designed to be compatible with the user's market requirements.

27. The worksation shall be designed to be compatible with the user's customer requirements.

28. The worksation shall be designed to be compatible with the user's partner requirements.

29. The worksation shall be designed to be compatible with the user's supplier requirements.

30. The worksation shall be designed to be compatible with the user's vendor requirements.

31. The worksation shall be designed to be compatible with the user's contractor requirements.

32. The worksation shall be designed to be compatible with the user's consultant requirements.

33. The worksation shall be designed to be compatible with the user's advisor requirements.

34. The worksation shall be designed to be compatible with the user's expert requirements.

35. The worksation shall be designed to be compatible with the user's specialist requirements.

36. The worksation shall be designed to be compatible with the user's niche requirements.

37. The worksation shall be designed to be compatible with the user's boutique requirements.

38. The worksation shall be designed to be compatible with the user's luxury requirements.

39. The worksation shall be designed to be compatible with the user's premium requirements.

40. The worksation shall be designed to be compatible with the user's high-end requirements.

41. The worksation shall be designed to be compatible with the user's top-end requirements.

42. The worksation shall be designed to be compatible with the user's elite requirements.

43. The worksation shall be designed to be compatible with the user's exclusive requirements.

44. The worksation shall be designed to be compatible with the user's select requirements.

45. The worksation shall be designed to be compatible with the user's choice requirements.

46. The worksation shall be designed to be compatible with the user's preferred requirements.

47. The worksation shall be designed to be compatible with the user's favorite requirements.

48. The worksation shall be designed to be compatible with the user's best requirements.

49. The worksation shall be designed to be compatible with the user's top requirements.

50. The worksation shall be designed to be compatible with the user's premier requirements.

51. The worksation shall be designed

